

Financed by

Organized by



Co-funded by  
the European Union



anefore



FORMATION ET  
SENSIBILISATION  
LUXEMBOURG

ERASMUS ACCREDITATION IN YOUTH  
2020-1-LU01-KA150-YOU-000078080



LONG-TERM TRAINING FOR TRAINERS

# “QUANTUM READY: SHAPING CAREERS IN A TRANSFORMATIVE WORLD” LTTot(QR)



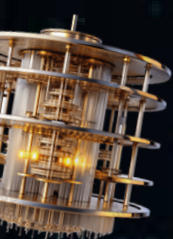
## PROJECT STRUCTURE



THE PROJECT CONSISTS OF TWO TRAINING COURSES THAT WILL BE CONDUCTED AS FOLLOWS:



**PART 1** THE FIRST RESIDENTIAL TRAINING WILL TAKE PLACE IN ESCH-SUR-ALZETTE, LUXEMBOURG; JANUARY 23-29, 2026.



**PART 2** THE SECOND RESIDENTIAL TRAINING WILL TAKE PLACE IN ESCH-SUR-ALZETTE, LUXEMBOURG; JULY 02-07, 2026.

## PROJECT DESCRIPTION



THE LTTot QR FOCUSES ON A RELATIVELY NEW FIELD OF QUANTUM TECHNOLOGY, DIGITAL TRANSFORMATION, AND INNOVATIVE INDUSTRIES. WHILE THE COURSE WILL NOT GO INTO TECHNICAL DETAILS, IT WILL EXPLAIN THESE FIELDS, WHY THEY MATTER, AND HOW THEY WILL SHAPE THE FUTURE, PARTICULARLY THE FUTURE JOB MARKET. PARTICIPANTS WILL LEARN HOW TO COMMUNICATE THE IMPORTANCE OF THESE FIELDS TO THEIR BENEFICIARIES- YOUNG PEOPLE, HELPING THEM UNDERSTAND THE OPPORTUNITIES AND CHALLENGES THEY PRESENT. THIS IS ESPECIALLY RELEVANT AS YOUNG PEOPLE, OFTEN EARLY ADOPTERS OF NEW TECHNOLOGIES, EXPRESS SIGNIFICANT CONCERNS ABOUT HOW THESE ADVANCEMENTS WILL IMPACT THEIR CAREERS AND ECONOMIC SITUATION.

**QR AIMS TO EQUIP PARTICIPANTS TO GUIDE OTHERS IN DEVELOPING THE SKILLS AND MINDSETS NEEDED FOR FUTURE CAREERS. IN A WORLD OF RAPID TECHNOLOGICAL CHANGE THAT DIRECTLY INFLUENCES THE JOB MARKETS, THIS TRAINING AIMS TO BRIDGE THE GAP BETWEEN CURRENT EDUCATION SYSTEMS AND THE DEMANDS OF TOMORROW'S WORKFORCE. IT ADDRESSES WIDESPREAD CONCERNS THAT NEW TECHNOLOGIES MAY NOT LEAD TO BETTER JOB OPPORTUNITIES OR FAIR DISTRIBUTION OF BENEFITS. BY FOCUSING ON INCLUSIVE AND ETHICAL APPROACHES, THE COURSE PREPARES PARTICIPANTS TO HELP YOUNG PEOPLE NAVIGATE THESE UNCERTAINTIES AND SEE THE OPPORTUNITIES IN TRANSFORMATIVE INDUSTRIES.**



## **THE OBJECTIVES OF THE PROJECT ARE:**

- TO ENHANCE PARTICIPANTS' AWARENESS OF THE EMERGING FIELDS OF QUANTUM TECHNOLOGY, AI, AUTOMATION, AND DIGITAL INDUSTRIES, HELPING THEM UNDERSTAND THEIR IMPACT ON ECONOMIC AND CAREER OPPORTUNITIES TO COMMUNICATE THEIR IMPORTANCE TO YOUNG PEOPLE AND OTHER BENEFICIARIES.**
- TO DEVELOP THE COMPETENCIES OF PARTICIPANTS IN ADDRESSING THE DISCONNECT BETWEEN TRADITIONAL EDUCATION SYSTEMS AND THE CONSTANTLY CHANGING JOB MARKET, EXPLORING HOW TECHNOLOGICAL ADVANCEMENTS ARE SHAPING THE FUTURE OF WORK, AND DEVELOPING STRATEGIES TO HELP YOUNG PEOPLE ADAPT, UPSKILL, AND PREPARE FOR NEW CAREER OPPORTUNITIES IN TRANSFORMATIVE INDUSTRIES.**
- TO EQUIP PARTICIPANTS WITH METHODOLOGIES/METHODS/TOOLS TO SUPPORT YOUNG PEOPLE IN NAVIGATING THE JOB MARKET, FACILITATING DISCUSSIONS ON EMERGING CAREER PATHS AND SKILL DEVELOPMENT.**



- TO GUIDE PARTICIPANTS IN EXPLORING STRATEGIES TO ENSURE THAT THE BENEFITS OF QUANTUM TECHNOLOGY AND DIGITAL INDUSTRIES ARE EQUITABLY DISTRIBUTED, ADDRESSING CONCERNS ABOUT JOB DISPLACEMENT BY AI AND ETHICAL DILEMMAS.**



- **TO HELP PARTICIPANTS UNDERSTAND AND PROMOTE THE ESSENTIAL SKILLS NEEDED FOR FUTURE EMPLOYABILITY IN THE QUANTUM PERIOD, INCLUDING ADAPTABILITY, CREATIVITY, AND DIGITAL LITERACY, TO DEVELOP TECHNIQUES TO GUIDE YOUNG PEOPLE IN PROACTIVELY SHAPING THEIR CAREERS AND SEEING OPPORTUNITIES IN EMERGING INDUSTRIES RATHER THAN FEARING JOB LOSS.**
- **TO PROMOTE COLLABORATION AND KNOWLEDGE EXCHANGE AMONG EUROPEAN YOUTH WORKERS, EDUCATORS, AND PROFESSIONALS. PARTICIPANTS WILL DEVELOP JOINT STRATEGIES FOR SUPPORTING YOUNG PEOPLE IN ADAPTING TO TECHNOLOGICAL TRANSFORMATIONS WHILE FOSTERING A SHARED EUROPEAN APPROACH TO FUTURE SKILLS DEVELOPMENT.**

## PROFILE OF PARTICIPANTS

**THE PROJECT'S DIRECT BENEFICIARIES ARE FORMAL AND NON-FORMAL EDUCATORS, YOUTH WORKERS, YOUTH LEADERS, AND SOCIAL WORKERS WHO WORK WITH YOUNG PEOPLE, AS WELL AS STAFF OF THE SENDING NGOS AND FORMAL EDUCATION SYSTEMS. GIVEN THE FOCUS ON ADDRESSING THE DISCONNECT BETWEEN TRADITIONAL EDUCATION SYSTEMS AND THE RAPIDLY EVOLVING JOB MARKET, PARTICIPANTS SHOULD BE INDIVIDUALS WHO ARE ACTIVELY ENGAGED IN YOUTH CAREER GUIDANCE, DIGITAL LITERACY, AND SKILLS DEVELOPMENT.**

### THEY SHOULD ALSO MEET THE FOLLOWING CRITERIA:

- **DEMONSTRATE PREVIOUS EXPERIENCE IN YOUTH EMPOWERMENT AND A STRONG MOTIVATION TO FURTHER THEIR KNOWLEDGE OF FUTURE JOB MARKET TRENDS, TECHNOLOGICAL ADVANCEMENTS, AND CAREER ADAPTABILITY.**
- **HAVE CLEARLY DEFINED LEARNING NEEDS AND SHARED EXPECTATIONS FOR NAVIGATING TECHNOLOGICAL CHANGE, SUPPORTING YOUNG PEOPLE IN CAREER READINESS, AND ADDRESSING ETHICAL CHALLENGES IN EMERGING INDUSTRIES.**
- **BE OPEN TO AND APPRECIATE NON-FORMAL LEARNING IN A HIGHLY DIVERSE CONTEXT, PARTICULARLY IN DIGITAL TRANSFORMATION, QUANTUM TECHNOLOGY AWARENESS, AND WORKFORCE DEVELOPMENT.**
- **BE COMMITTED TO ENGAGING IN THE LONG-TERM LEARNING PROCESS, INCLUDING TAKING RESPONSIBILITY FOR SELF-DIRECTED LEARNING, EXPLORING INCLUSIVE AND ETHICAL APPROACHES TO TECHNOLOGICAL ADVANCEMENTS, AND ACHIEVING LEARNING OUTCOMES RELEVANT TO GUIDING YOUNG PEOPLE IN TRANSFORMATIVE INDUSTRIES.**



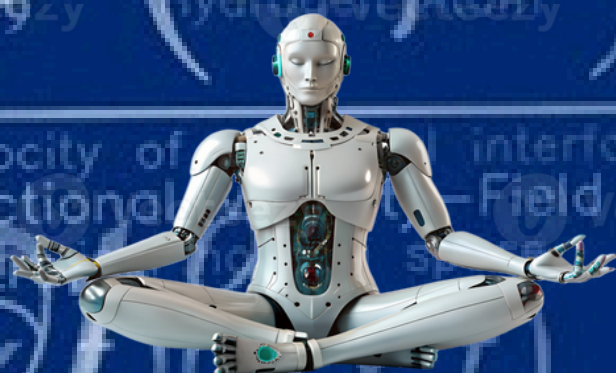
- **POSSESS THE ABILITY TO REFLECT ON THEIR LEARNING PROCESS AND CRITICALLY ASSESS THEIR LEARNING OUTCOMES, ESPECIALLY IN DEVELOPING STRATEGIES TO SUPPORT YOUTH IN UPSKILLING AND PREPARING FOR FUTURE CAREERS.**
- **SHOW A HIGH COMMITMENT TO FOLLOW-UP ACTIVITIES AND NETWORKING OPPORTUNITIES, ENSURING THE PROJECT'S SUSTAINABILITY BY INTEGRATING ACQUIRED KNOWLEDGE INTO YOUTH WORK, CAREER COUNSELLING, AND EDUCATIONAL INITIATIVES.**

**BY SELECTING PARTICIPANTS WITH THESE BACKGROUNDS AND COMPETENCIES, THE TRAINING WILL EFFECTIVELY EMPOWER THEM TO BRIDGE THE GAP BETWEEN EDUCATION AND FUTURE WORKFORCE DEMANDS. IT WILL ENABLE THEM TO GUIDE YOUNG PEOPLE THROUGH THE CHALLENGES AND OPPORTUNITIES OF DIGITAL TRANSFORMATION AND QUANTUM TECHNOLOGIES.**

FORMATION ET SENSIBILISATION LUXEMBOURG - FSL, IS N NGO BY A COMMUNITY OF EDUCATORS, ACTIVISTS, AND CITIZENS COMMITTED TO PARTICIPATION AND INCLUSION, WHOSE MISSION IS TO EMPOWER SOCIETY MEMBERS TO PARTICIPATE IN PUBLIC LIFE AND PROMOTE THE SENSE OF BELONGING, ACTIVE CITIZENSHIP AND PARTICIPATION BY ADVANCING HUMAN RIGHTS EDUCATION, NON-FORMAL EDUCATION, AND ENGAGEMENT ACROSS THE SOCIAL, CULTURAL, ECONOMIC, AND POLITICAL SPHERES. SINCE 2013, WE HAVE WORKED TO EMPOWER PEOPLE OF ALL AGES TO TAKE PART IN PUBLIC LIFE, BUILD STRONGER CONNECTIONS ACROSS CULTURES, AND PROMOTE A SENSE OF BELONGING. STARTING AS A SMALL GROUP OF NON-FORMAL EDUCATION TRAINERS, FSL HAS GROWN INTO A RECOGNISED ASSOCIATION THAT CONTRIBUTES TO SOCIAL COHESION, ACTIVE CITIZENSHIP, AND CIVIC ENGAGEMENT IN LUXEMBOURG AND ACROSS EUROPE.



**FORMATION ET  
SENSIBILISATION  
LUXEMBOURG**







# TRAVEL BUDGET

Travel distance	Green travel	Non-Green travel
10 – 99 km	56 EUR	28 EUR
100 – 499 km	285 EUR	211 EUR
500 – 1999 km	417 EUR	309 EUR
2000 – 2999 km	535 EUR	395 EUR
3000 – 3999 km	785 EUR	580 EUR
4000 – 7999 km	1188 EUR	1188 EUR
8000 km or more	1735 EUR	1735 EUR





# ACCESS/PUBLIC TRANSPORTATION IN LUXEMBOURG

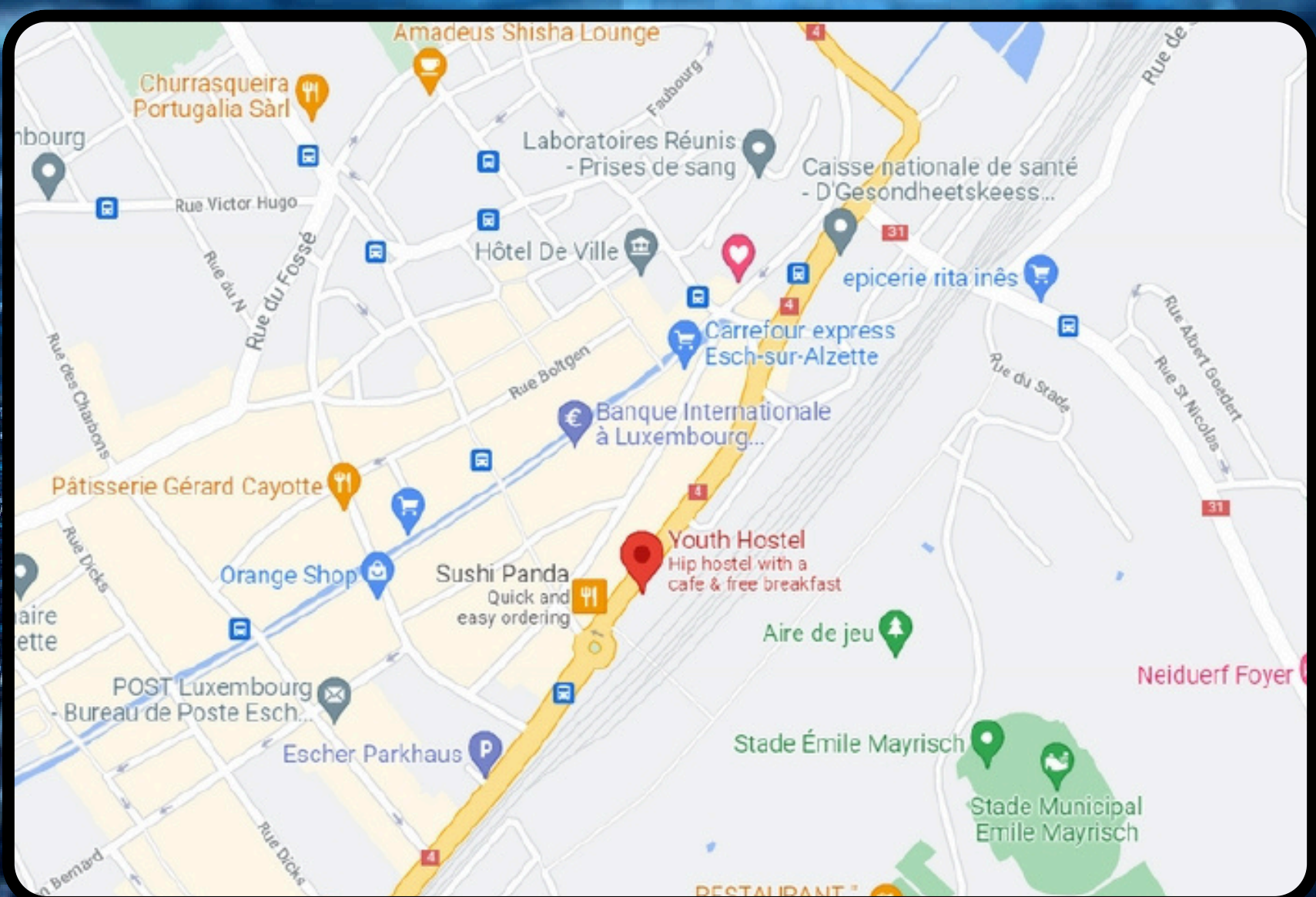
IF YOU ARRIVE BY PLANE, TAKE THE BUS 29 (DIRECTION GASPERICH, GUILLAUME KROLL) OR TAKE THE TRAM TO THE STOP "LUXEMBOURG, GARE CENTRALE ROUTIÈRE". FROM LUXEMBOURG CENTRAL STATION YOU SHOULD TAKE TRAIN TO ESCH/ALZETTE GARE. AS THE YOUTH HOSTEL IS SITUATED DIRECTLY NEXT TO THE ESCH/ALZETTE BUS AND TRAIN STATION, IT IS COMFORTABLY ACCESSIBLE BY PUBLIC TRANSPORTATION. THE TRAIN CONNECTION FROM THE CAPITAL TO ESCH TAKES A 24 MINUTES!



THOSE ARRIVING BY TRAIN CAN GET OFF AT THE CENTRAL STATION AND TAKE THE TRAIN TO "ESCH/ALZETTE-GARE".

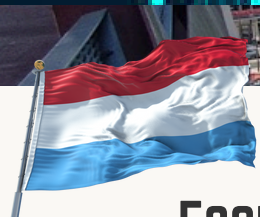
[HTTPS://WWW.LUX-AIRPORT.LU/PASSENGERS-VISITORS/FROM-THE-AIRPORT/BUS-SCHEDULE-LUXEMBOURG-AIRPORT/#01](https://www.lux-airport.lu/passengers-visitors/from-the-airport/bus-schedule-luxembourg-airport/#01)

MORE INFORMATION OR TIMETABLES FOR BUSES TO/FROM THE STOP 'ESCH/ALZETTE-GARE'.  
[WWW.MOBILITEIT.LU](http://WWW.MOBILITEIT.LU)





# **VENUE: ESCH-SUR-ALZETTE CITY, LUXEMBOURG**



**ESCH-SUR-ALZETTE IS THE HEART OF SOUTHERN LUXEMBOURG, THE SO-CALLED MINETTE REGION. LONG BEFORE THE GRAND DUCHY BECAME A GLOBAL PLAYER IN THE FINANCIAL SECTOR AND THE EUROPEAN UNION INSTITUTIONS WERE ESTABLISHED, THE REGION WAS KNOWN THROUGHOUT EUROPE FOR IRON ORE EXPLOITATION AND PROCESSING. WHILE THE MINETTE'S INDUSTRIAL HERITAGE REMAINS OMNIPRESENT, ESCH AND ITS MODERN BELVAL DISTRICT HAVE BECOME POPULAR FOR STUDENTS AND CONCERTGOERS. SEVERAL MUSIC VENUES, INCLUDING THE COUNTRY'S LARGEST – THE ROCKHAL – ARE FOUND HERE. GRAND DUCHY OF LUXEMBOURG IS LOCATED IN THE HEART OF EUROPE, BORDERED BY GERMANY, FRANCE AND BELGIUM WHERE YOU CAN DRIVE 3 HOURS TO BE IN FRANKFURT, BRUSSELS, AND PARIS.**



**THE CAPITAL, LUXEMBOURG CITY, IS, TOGETHER WITH BRUSSELS AND STRASBOURG, ONE OF THE THREE OFFICIAL CAPITALS OF THE EUROPEAN UNION AND THE SEAT OF THE EUROPEAN COURT OF JUSTICE, THE HIGHEST JURIDICAL AUTHORITY IN THE EU, MANY EUROPEAN INSTITUTIONS ARE BASED IN LUXEMBOURG AS LUXEMBOURG WAS A FOUNDING MEMBER OF MANY EUROPEAN INSTITUTIONS; AND TO KNOW THAT THE WORD (SCHENGEN) THAT IS USED FOR THE VISAS IS ONE OF THE CITIES IN LUXEMBOURG WHERE THE TREATY WAS SIGNED. LUXEMBOURG HAS 3 OFFICIAL LANGUAGES: LUXEMBOURGISH, FRENCH AND GERMAN. CURRENCY IS EURO, PUBLIC TRANSPORTATION IS FREE FOR ALL OVER LUXEMBOURG.**



# MANDATORY DOCUMENTS TO GIVE TO GET REIMBURSED

1. BOOKING EMAIL FROM AIR COMPANY (ONLY WHEN BOOKED ONLINE);
2. E-TICKET OR/AND RECEIPT/INVOICE FROM FLIGHTS;
3. ELECTRONIC TICKETS AND ALL OTHER ORIGINAL TICKETS(BUS/TRAIN) USED DURING YOUR TRAVEL TO LUXEMBOURG;
4. BOARDING PASSES (ONLINE CHECK-IN WITH PDF DOCUMENTS ARE PREFERRED).

## OTHER COSTS

FOOD, ACCOMMODATION AND PROGRAM COSTS WILL BE PROVIDED AND FULLY PAID THANKS TO FINANCIAL SUPPORT FROM ERASMUS+ PROGRAM GRANTED BY LUXEMBOURGISH NATIONAL AGENCY - ANEFORÉ.



## PARTICIPATION IN THE PROJECT

YOU ARE EXPECTED TO PARTICIPATE FULLY IN ALL ACTIVITIES, UNLESS YOU ARE ILL. **UNAUTHORIZED ABSENCE FROM ACTIVITIES AND WORKSHOPS IS NOT PERMITTED.** IF LESS THAN 80% OF THE PROGRAMME IS ATTENDED, IT WILL NOT BE POSSIBLE TO BE REIMBURSED FOR THE INTERNATIONAL TRAVEL COSTS.

**IMPORTANT**



# WHAT TO BRING WITH YOU?

**1. MEDICINES: FOR PREVENTIVE REASONS WE RECOMMEND FOR THOSE WHO HAVE HEALTH PROBLEMS TO BRING THEIR OWN MEDICINES;**

**2. CHARGER AND LOADING CABLES OF YOUR E-DEVICES;**

**3. IF YOU HAVE AND CONSIDER IMPORTANT TO CARRY WITH YOU -A MOBILE, CAMERA, TABLET, LAPTOP ETC.**

**4. PERSONAL HYGIENE ITEMS SUCH AS TOWELS, SHAMPOOS, GEL, TOOTHPASTE, ETC.**

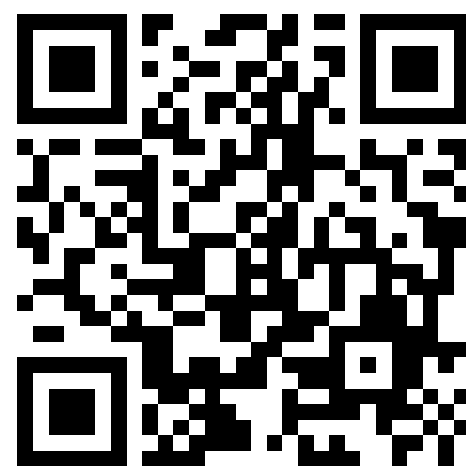
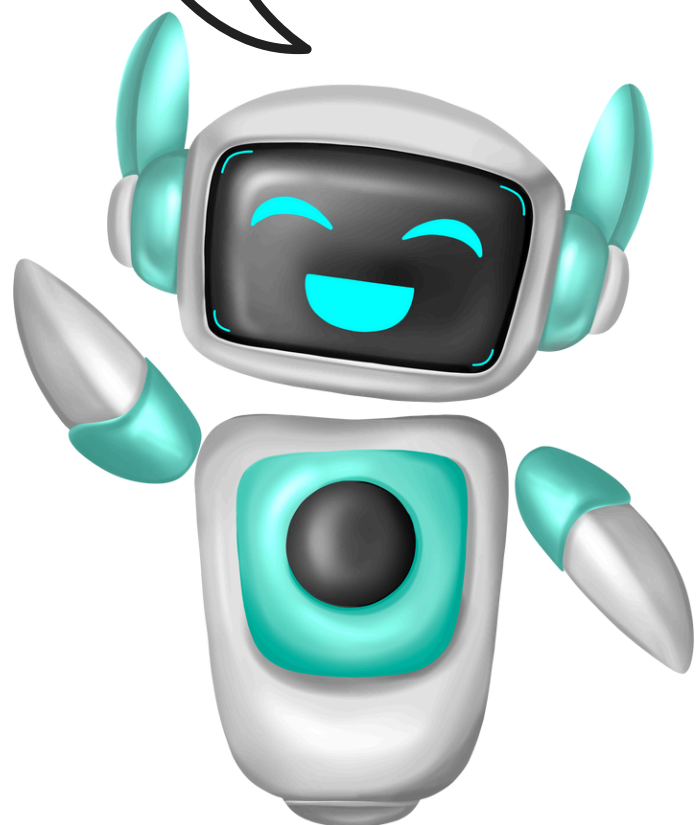
**5. INTERNATIONAL PASSPORT – PLEASE, CHECK THE VALIDITY OF THE PASSPORTS BEFORE THE DEPARTURE – IT NEEDS TO BE VALID AT LEAST FOR 3 MONTHS AFTER YOUR VISIT TO LUXEMBOURG. FOR NON EU CITIZENS YOU MUST SEND US THE PASSPORT DETAILS IN ORDER TO PREPARE INVITATION LETTERS. FOR THE EU CITIZENS TRAVELING FROM INSIDE THE EU A VALID ID WILL BE SUFFICIENT FOR TRAVELING.**



## IMPORTANT LINKS



SEE YOU...



**FOLLOW FSL**

Financed by



Co-funded by  
the European Union



**anefore**

Organized by



**FORMATION ET  
SENSIBILISATION  
LUXEMBOURG**

**IN CASE YOU NEED MORE INFO, PLEASE CONTACT: [FSLUXEMBOURG@GMAIL.COM](mailto:FSLUXEMBOURG@GMAIL.COM)**

**+352 691 548 071 - TATEV**

**+352 691 583 081 - SEG**

