

INFO PACK

Thematic Awareness Training - Peers for Diversity

Moneasa (Arad county), Romania



Introduction

When & Where

The Thematic Awareness Training - Peers for Diversity - will take place from the **12th of May** (arrival day) until the **21st of May 2025** (departure day) in Moneasa (Arad county), Romania.

At the following link you can also find the online application form, which each participant who will participate in the training course will need to fill in this Google form:

<https://forms.gle/pXfpRm4knfViMviV9>

01

Content of TAT

The Thematic Awareness Training - Peers for Diversity - is based on a peer education methodology, where the topics of diversity, interculturalism, and anti-discrimination are addressed and discovered.

The Training Course is addressing youth workers and trainers, offering them theoretical and practical tools to use when training and organizing activities on the topic of diversity.

02

The Organisation

Ofensiva Tinerilor Association was founded in 2004, promoting European values being an integral part of its purpose.

Our mission is to provide young people with accessible educational opportunities to help them reach their full potential. We do this by educating students through non-formal activities on social issues such as diversity, gender equality, inclusion, anti-bullying and non-discrimination.

03

INFO PACK

Thematic Awareness Training - Peers for Diversity

Căsoaia (Arad), Romania



Introduction

Moreover, we offer youth workers and teachers the opportunity to personally experience the programs we offer and learn about different working practices in peer-to-peer education.

Every year, we organize both Thematic Awareness Trainings (to familiarize with our methodologies) and Train-the-Trainer activities (to develop facilitation skills) on the topics covered by our programs. We aim for participants to use the skills they have acquired locally, in the communities where they usually work, and to report on their achievements and the challenges they have encountered.

What we offer

04

05

Good to know

- Participants should be involved in youth work, being part of the staff or volunteers of the sending organization.
- All participants who would like to join this training course, would need to have a sending organization, who will sign a short mandate form with us before sending the participant, in order to formalize our partnership.
- Participants will be selected according to their motivation to participate in the training and the willingness to be part of the learning journey.
- We will be announcing the participants that will be selected to be part of the training, who then will have to announce their sending organizations of the fact that they were selected to participate in the training. After this, we will proceed with signing the official partnership/mandate form.

LOGISTICAL ASPECTS



Transportation

For arrival to Arad, Romania, participants can:



Use the airport of Budapest 250 km away from Arad; a special shuttle bus or direct train can be used to arrive to Arad. For shuttle bus we recommend Simplicity company; below you have their contact details:

phone: 0040744222299

e-mail address: office@simplicity.ro

website: <https://www.simplicity.ro/>

The prices chart for Arad-Budapest / Budapest airport-Arad:

TIP TRANSFER	TARIF <i>(price)</i>	LEI	EURO
SHUTTLE	adult	175	35
	copil (0-12 ani) <i>(child)</i>	85	17



- Use the airport of Timisoara 50 km away from Arad; from Timișoara airport to Arad you can use public transportation (train). The train stations you need are: Timișoara Nord & Arad. From Arad train station you can take tram no. 3 or no. 6. Tickets for the train are available in the station, and for the tram are available by card in the trams (0,81€). Below you have the website with the train schedules:

<https://mersultrenurilor.infofer.ro/en-GB/Itineraries>

- Use the train; there are direct routes from Budapest several times each day, from the Keleti train station. The journey takes around 4-5 hours to Arad; here you can find the website for purchasing the tickets online and, on the next page, there is also an example of schedule:

<https://bileteinternationale.cfrcalatori.ro/en/booking/search>



LOGISTICAL ASPECTS



SEARCH OUTWARD JOURNEY

Budapest-Keleti - Arad

📅 20.10.2022 ⌚ 15:35 ➡ 5 Changes ⌚ 20 Minutes

🔍 CHANGE SEARCH

🕒 SEARCH EARLIER

📍 Departure From Budapest-Keleti 📅 20.10.22 ⌚ 17:10	➡ 0 - 8 04:25	📍 Arrival To Arad 📅 20.10.22 ⌚ 22:35
≡ DETAILS	🗺 MAP	Not available online
📍 Departure From Budapest-Keleti 📅 20.10.22 ⌚ 19:10	➡ 0 - 8 04:40	📍 Arrival To Arad 📅 21.10.22 ⌚ 00:50
≡ DETAILS	🗺 MAP	RETURN JOURNEY
📍 Departure From Budapest-Keleti 📅 20.10.22 ⌚ 22:45	➡ 0 - 8 04:43	📍 Arrival To Arad 📅 21.10.22 ⌚ 04:28
≡ DETAILS	🗺 MAP	RETURN JOURNEY
📍 Departure From Budapest-Keleti 📅 20.10.22 ⌚ 22:45	➡ 0 - 8 04:44	📍 Arrival To Arad 📅 21.10.22 ⌚ 04:29
≡ DETAILS	🗺 MAP	RETURN JOURNEY



- Use the car; in case you do so please keep your pay toll receipt (we would need those to show your route), as well as a Google map print showing your route of both way travels.
- Use the bus; there are several private bus companies on the Internet that are going around Europe through different cities. Here is a website where you can find available buses to/from Romania: <https://www.checkmybus.com/romania>

You can, of course, combine all the means of transportations from above.

LOGISTICAL ASPECTS



Accommodation

You will be staying at **Complex Turistic Căsoaia**

Camp Moneasa is located at the foot of the Codru Moma mountains, in the picturesque resort of Moneasa, which seems nestled in a small depression crossed by clear streams, bordered by forests and meadows. Sheltered from cold winds in winter, with a mild climate all year round, Moneasa resort is a true oasis of relaxation, thanks to the strongly ionized air and natural therapeutic factors.

We will organise a special transportation for all participants (a bus) that will take you there. For this, we kindly ask you to let us know the approximate time of your arrival, to be able to book the transportation and choose an appropriate hour that suits everyone's arrival time in Arad. Until the departure of the bus to Moneasa, you will spend your time freely in the city - Arad (see info about the city below).

In case you decide on coming by car, the address is: Sat Moneasa, jud. Arad.

On the next page, you will find some photos of the rooms, bathrooms, and outside area.



About Arad

"Arad - a city with personality"

A few places you can explore during your stay in Arad :)

- <http://www.aradcityguide.ro/en/>
- <https://www.youtube.com/watch?v=XzdyRHd1lV0>



LOGISTICAL ASPECTS



More >

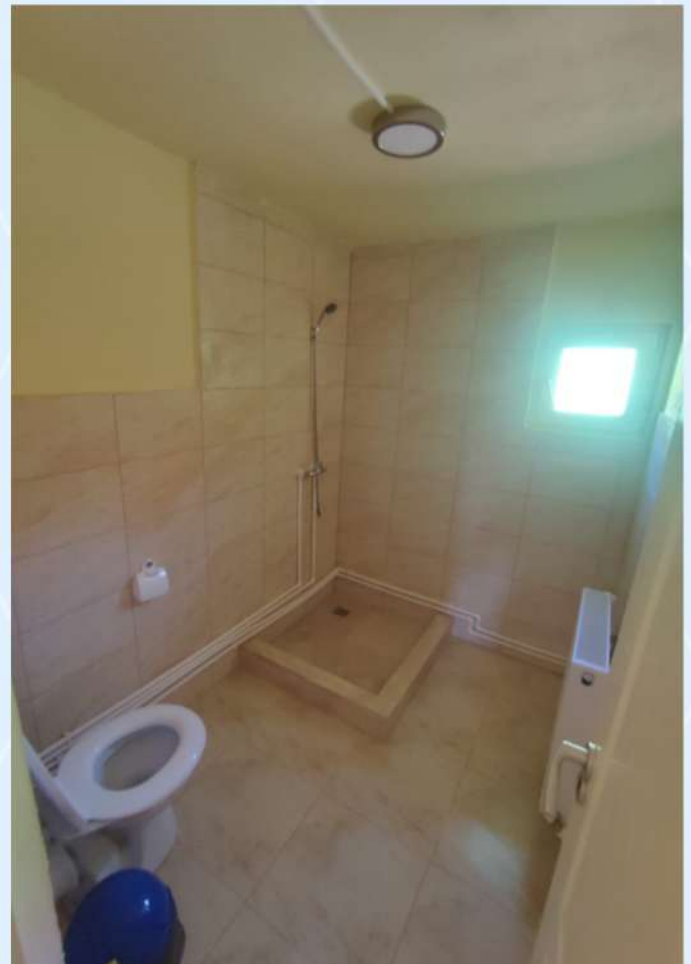
LOGISTICAL ASPECTS



LOGISTICAL ASPECTS



Participants will be hosted in rooms of 2 and 3 people, according to same gender and bathrooms will be shared.



More >

LOGISTICAL ASPECTS



Food



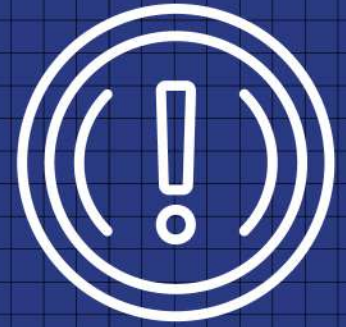
We will provide everyone with 3 meals and 2 coffee breaks/day. Participants will be asked for special dietary needs in the application form. Please make sure to fill in the specific section, as it will help us and the catering staff prepare and offer the best service possible.

In case you will not mention your special dietary need in the application form, we will not be able to guarantee that it will be taken into consideration by the restaurant. Please keep in mind that here we refer to allergies, intolerance to any food groups as well as not eating specific types of food out of religious reasons.

Participants will contribute to maintaining the space clean – this means everyone will wash their dishes and cutlery and help setting the table.



IMPORTANT ASPECTS



Reimbursement

Each participant will receive a reimbursement form; participants' travel costs will be reimbursed according to the funding rules of the ERASMUS+ program.

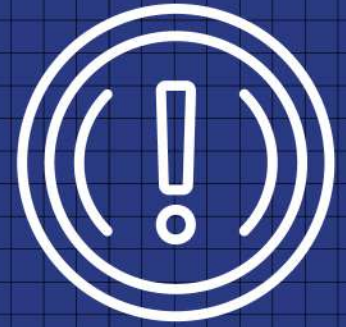
Reimbursement will be done by bank transfer to each participant right after our association will receive all original both ways travel documents from all participants (round trip boarding passes, flight itinerary, bus or train tickets).

Based on the distance bands (that can be found in the Erasmus+ Programme Guide), we will reimburse the travel costs as according to the table below:

Travel support	Contribution to the travel costs of participants, from their place of origin to the venue of the activity and return. Below 500 KM, participants will, as a general rule, travel with low-emissions means of transport. Financing mechanism: contribution to unit costs. Rule of allocation: based on the travel distance per participant. The applicant must indicate the distance between the place of origin and the venue of the activity ⁵⁶ by using the distance calculator supported by the European Commission ⁵⁷ . If necessary, individual support to cover subsistence costs are eligible for travel time before and after the activity, with a maximum of two travel days for participants and accompanying persons receiving non-green travel support, and a maximum of six travel	Travel distance	Green travel	Non-Green travel
		10 – 99 km	56 EUR	28 EUR
100 – 499 km	285 EUR	211 EUR		
500 – 1999 km	417 EUR	309 EUR		
2000 – 2999 km	535 EUR	395 EUR		
3000 – 3999 km	785 EUR	580EUR		
4000 – 7999 km	1188 EUR	1188 EUR		
8000 km or more	1735 EUR	1735 EUR		

More >

IMPORTANT ASPECTS



Do not forget to pack:



- Your good mood! :)
- Some outdoor clothing - you will like being comfy in the nature and evenings can be slightly cold outside;
- Mosquito spray - summer in the nature can provide some mosquitoes...;
- Music you like, we could use it during the breaks and working sessions;
- In case you use any kind of medication please make sure you would have enough for your stay;
- Laptop/photo camera - if you wish;
- Everything you need for your own personal comfort and for your evenings entertainment: musical instruments, games, sports shoes, and clothes, etc.;
- Optional: Some traditional sweets or drinks you can share with other participants during free evenings.



The end.